

## Scatterplot and Line Graphing Checklist

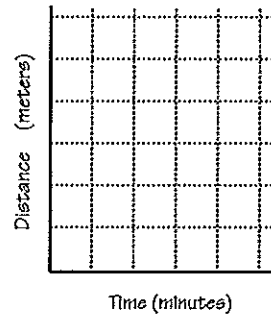
- Start with a table of data.

Time (minutes)	Distance (meters)
0	0
1	5
2	9
3	16
4	20
5	27

- Decide which type of graph is best for the data (bar or line graph).

line graph

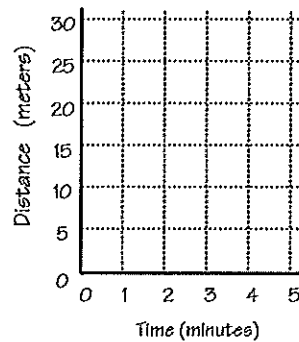
- Draw the axes and label them with the names and units of the data.



- Decide on a scale for each axis. Be sure there is enough space for all the data, but that it's not too crowded.

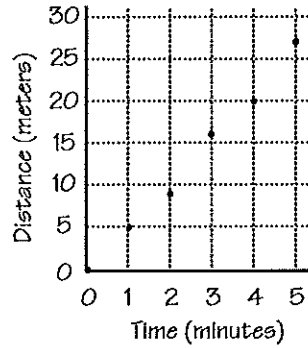
Time axis:        1 block = 1 minute  
Distance axis:   1 block = 5 meters

- Draw intervals on the graph and label them clearly.

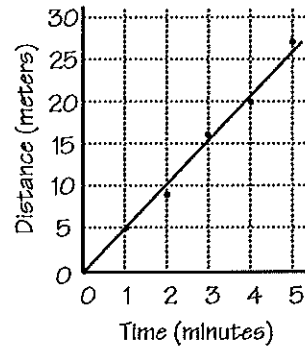


## Scatterplot and Line Graphing Checklist (continued)

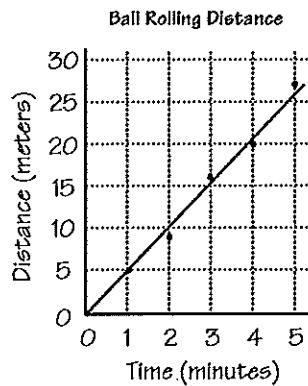
- Put data points on the graph, using a dot for each one.



- For a scatterplot, leave the points unconnected.  
For a line graph, draw a smooth line or curve through the points.



- Title your graph so it describes what it shows.



- Include a key, if necessary.

● = large ball  
○ = small ball